



Load Pin

Accurate real-time load monitoring of any load bearing pin connection or joint.



Options



Wireless & Internal Antenna



Matched Telemetry Displays



Cabled with 49.2ft flying cable



Data Logging Software Available



ATEX version

Load pins are integrated in mechanical structures and mechanisms to provide precise load monitoring accurate to 1%, safety factor of 5:1 and all proof loaded to 150%.

Load Cell Data Logging

LMS-LOG100 Advanced data logging software provides real time monitoring of up to 100 load cell devices simultaneously.

Remotely access your data quickly and easily from a computer, tablet & smart phone via web browser. Export data in standard JSON or CSV formats with customizable reporting to suit your needs.

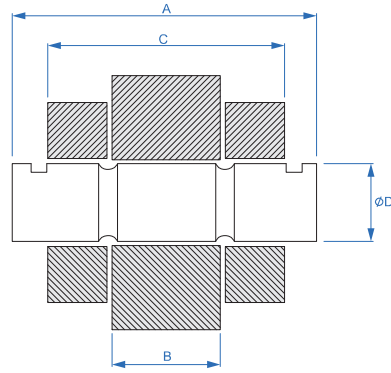


Why Choose LMS products?

LMS products have a proven track record in some of industries toughest and most demanding applications. With over 25 years' load monitoring experience you can be confident that you're buying a quality product from a leading specialist.

Features

- Output options include mV, mA, V, RS232 with others available (on request)
- Single, dual and redundant bridge designs
- Standard operating temperature -68°F to +176°F
- Plug-in connector versions available
- Integral signal conditioning available
- Enclosure IP67 as standard
- Subsea variants (on request)
- Every unit load tested and certified



Indicate preferred side for load pin head and anti-rotation plate with enquiry.

Each load pin will be designed and manufactured to suit your application, ensuring maximum performance and ease of installation.

Detailed above are the most critical dimensions. When making an enquiry, please provide these values (A, B, C and D) along with any additional requirements/restrictions due to the application such as pin length, head size etc.

Load Pin Locking

The load pin needs to be securely locked into position. This can be achieved by the following common methods:

- Single anti-rotation plate
- Double anti-rotation plate (both on one end or one on each end of pin)
- Anti-rotation plate, split pin & washer
- Anti-rotation plate and lock nut on threaded end of load pin
- Anti-rotation yoke (similar to shackles), split pin & washer

Applications

Calibration & Testing

- Water weights & bags
- Beam proof load
- Crane/hoist loads
- Bollard pull for vessels
- Force calibration
- Hydraulic presses
- Laboratory weighing & calibration

Industry Applications

- Wind turbine installations
- Warehouse dispatch
- Subsea vehicle lifting
- Subsea cable laying, recovery & repair
- Subsea ploughs
- Anchor systems
- Mooring systems
- Under hook crane weighing
- Pipe laying ships
- Structural joints
- Hydraulic presses
- Lifting systems
- Aerospace development

Monitoring & Measurement

- Cable tension
- Towing
- Mooring
- Crane safe
- Anchor line tension
- Static wire tension
- Winch load
- Elevator cable
- Speed
- Payout distance
- Jacking force
- Pile force
- Sheave/pulley system line tension
- Container weighing
- Center of gravity weighing
- Overload protection