



**PROOFCERT**  
TEST THE IMPOSSIBLE



# Load Pin Shackle

Robust, compact high tensile steel design from 2Ton to 2000Ton.



## Options



Wireless & Internal Antenna



Matched Telemetry Displays



Cabled with 49.2ft flying cable



Data Logging Software Available



ATEX version

Ideal for precise tensile load monitoring for your lifting, static, pulling or weighing applications. Suitable for all industry sectors including marine, onshore, offshore and subsea.

You can be confident each shackle and load pin is up to the task with the certified load test before delivery.

## Displays & Portable Case

Rugged case design with foam compartments to firmly hold the load link, telemetry display, spare set of batteries. Can also accommodate connecting cable for wired units and matched set of shackles.

- Lockable case
- Available for 5Ton to 35Ton load shackle sizes
- Transport case provided for 55Ton and above sizes



## Load Cell Data Logging

LMS-LOG100 Advanced data logging software provides real time monitoring of up to 100 load cell devices simultaneously.

Remotely access your data quickly and easily from a computer, tablet & smart phone via web browser. Export data in standard JSON or CSV formats with customizable reporting to suit your needs.

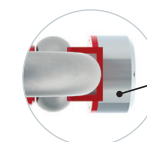


## Features

- Design uses VanBeest™ Greenpin® shackles as standard others on request
- Load pins from high-strength stainless steel
- Safety factor of 5:1
- Up to 12 shackles can be linked to the handheld display for individual or summed load values
- Integral signal conditioning
- Subsea variants available on request
- Special design available on request



Centralizing bobbin for improved load cell accuracy

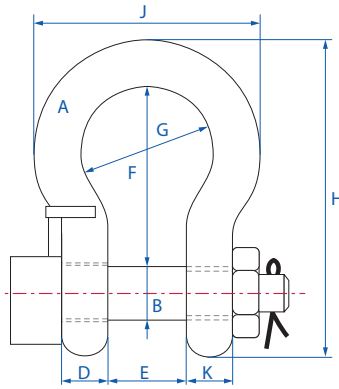


Integrated aerial for added protection

[www.proofcert.com](http://www.proofcert.com)  
[charles@proofcert.com](mailto:charles@proofcert.com)  
Call: 912.964.9465



[www.loadsystems.co.uk](http://www.loadsystems.co.uk)



## Standard Designs (Van Beest Shackles)

Capacity		Dimensions (Inch)								Weight Pounds (LBS)
Ton (MT)	Pounds (LBS)	a	b	d	e	f	g	h	j	
3.25	7,165	0.62	0.74	0.62	1.02	2.48	1.69	4.33	2.95	3.9
4.75	10,471	0.74	0.86	0.74	1.22	2.99	2.00	5.07	3.50	5.9
6.5	14,330	0.86	0.98	0.86	1.41	3.26	2.28	5.62	4.01	8.9
13.5	29,762	1.25	1.3	1.2	2.0	4.5	3.2	7.9	5.7	10.9
25	55,115	1.77	1.9	1.7	2.9	7.0	4.9	11.8	8.5	31.4
35	77,161	1.9	2.2	1.9	3.2	7.7	5.4	13.0	9.3	43.7
55	121,254	2.5	2.7	2.5	4.1	10.2	7.0	17.0	12.2	39.5
85	187,392	2.9	3.2	2.8	5	12.9	7.4	20.7	13.3	87.1
120	264,554	3.7	3.7	3.5	5.7	15.7	9.3	25.4	16.8	242.6
150	330,693	4.1	4.2	4.0	6.6	16.1	10.8	27.0	19.0	352.8
200	440,924	4.7	5.1	4.4	7.0	20.1	11.4	32.9	20.8	518.1
250	551,155	5.1	5.5	4.6	8.0	21.8	12.0	35.5	22.2	628.3
300	661,386	5.5	5.9	4.8	8.0	24.3	12.0	39.2	23.0	749.6
400	881,849	6.6	6.8	6.4	9.0	26.2	12.7	43.8	26.1	1234.6
500	1,202,311	7.0	7.2	6.4	10.0	28.2	13.7	46.8	27.9	1510.2
600	1,322,773	7.8	8.0	7.4	11.1	28.2	14.7	48.9	30.5	1940.1
700	1,543,236	8.2	8.4	8.0	12.1	28.2	15.7	49.7	32.2	980
800	1,763,698	8.2	8.6	8.0	12.1	28.2	15.7	50	32.2	2160.5
900	1,984,160	8.6	9.0	8.4	12.9	28.2	16.5	51.0	33.8	2821.9
1000	2,204,623	9.4	9.4	8.4	13.7	28.2	16.5	52.5	35.4	3218.8

## Special Designs (Crosby Shackles)

Capacity		Dimensions (Inch)								Weight Pounds (LBS)
Ton (MT)	Pounds (LBS)	a	b	d	e	f	g	h	j	
6.5	14,330	0.96	1	0.88	1.44	3.30	2.28	5.82	4.01	7.1
25	55,115	1.75	2.00	1.92	2.87	7.00	5	12.3	8.85	39.7

## Applications

### Calibration & Testing

- Water weights & bags
- Beam proof load
- Crane/hoist loads
- Bollard pull for vessels
- Force calibration
- Hydraulic presses
- Laboratory weighing & calibration

### Industry Applications

- Wind turbine installations
- Warehouse dispatch
- Subsea vehicle lifting
- Subsea cable laying, recovery & repair
- Subsea ploughs
- Anchor systems
- Mooring systems
- Under hook crane weighing
- Pipe laying ships
- Structural joints
- Hydraulic presses
- Lifting systems
- Aerospace development

### Monitoring & Measurement

- Cable tension
- Towing
- Mooring
- Crane safe
- Anchor line tension
- Static wire tension
- Winch load
- Elevator cable
- Speed
- Payout distance
- Jacking force
- Pile force
- Sheave/pulley system line tension
- Container weighing
- Center of gravity weighing
- Overload protection